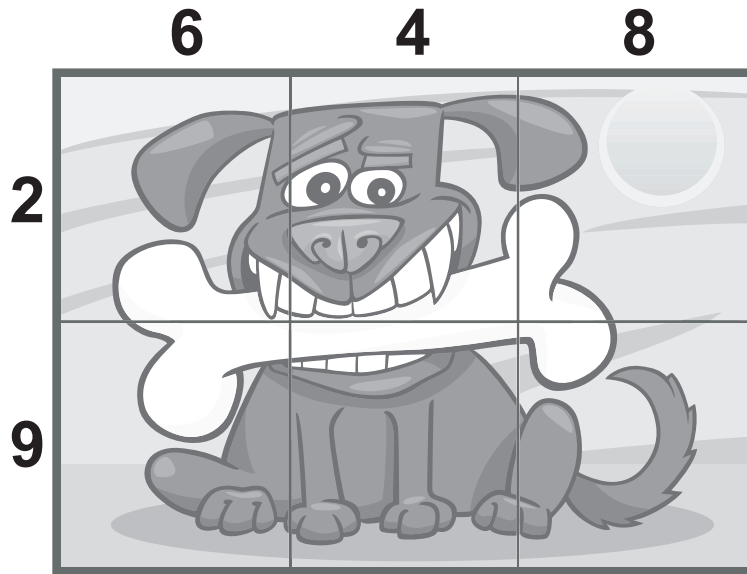


Rechenpuzzle

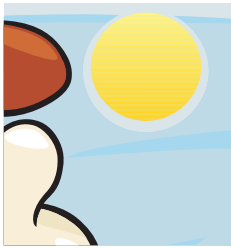
Finde das richtige Teil und addiere dann die Zahlen, die über und links von diesem Teil sind.



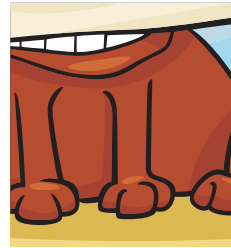
$$\underline{\hspace{2cm}} + \text{= } \boxed{\hspace{1cm}}^1$$



$$\underline{\hspace{2cm}} + \text{= } \boxed{\hspace{1cm}}^4$$



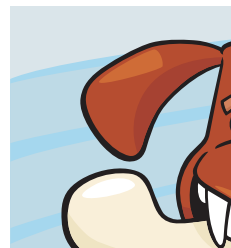
$$\underline{\hspace{2cm}} + \text{= } \boxed{\hspace{1cm}}^2$$



$$\underline{\hspace{2cm}} + \text{= } \boxed{\hspace{1cm}}^5$$



$$\underline{\hspace{2cm}} + \text{= } \boxed{\hspace{1cm}}^3$$



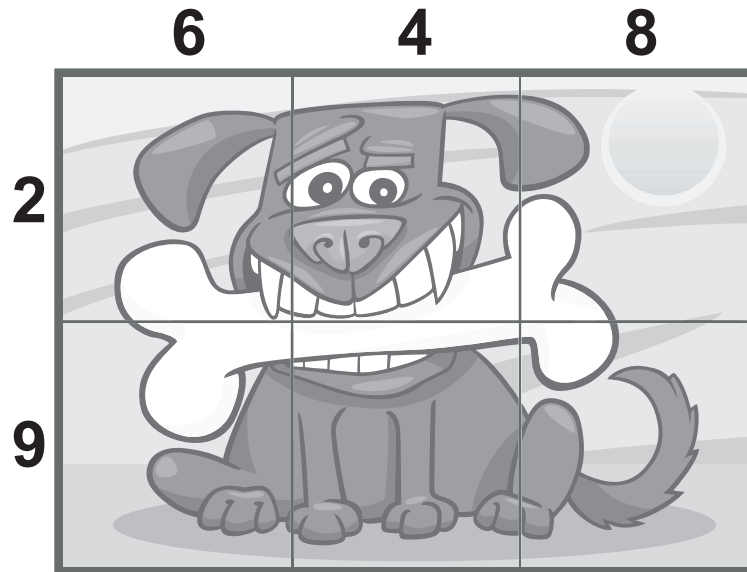
$$\underline{\hspace{2cm}} + \text{= } \boxed{\hspace{1cm}}^6$$

Trage die Ergebnisse in die unteren Kästchen ein, und löse die Kettenaufgabe.

$$\boxed{\hspace{1cm}}^1 - \boxed{\hspace{1cm}}^2 - \boxed{\hspace{1cm}}^3 + \boxed{\hspace{1cm}}^4 - \boxed{\hspace{1cm}}^5 + \boxed{\hspace{1cm}}^6 = \boxed{\hspace{1cm}}$$

Rechenpuzzle

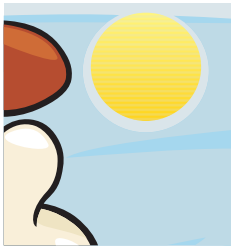
Finde das richtige Teil und addiere dann die Zahlen, die über und links von diesem Teil sind.



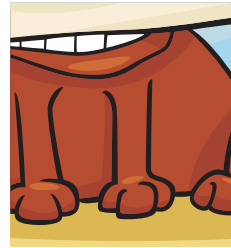
$$8 + 9 = \boxed{17}^1$$



$$6 + 9 = \boxed{15}^4$$



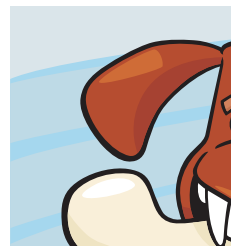
$$8 + 2 = \boxed{10}^2$$



$$4 + 9 = \boxed{13}^5$$



$$4 + 2 = \boxed{6}^3$$



$$6 + 2 = \boxed{8}^6$$

Trage die Ergebnisse in die unteren Kästchen ein, und löse die Kettenaufgabe.

$$\boxed{17}^1 - \boxed{10}^2 - \boxed{6}^3 + \boxed{15}^4 - \boxed{13}^5 + \boxed{8}^6 = \boxed{11}$$