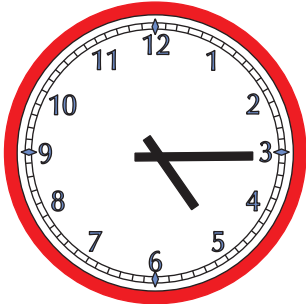


Mathe Online-Schule

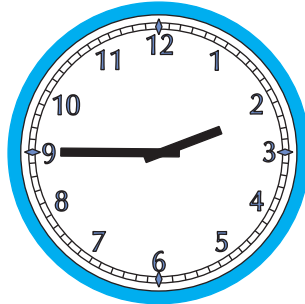
Wie spät ist es?

Trage die Uhrzeiten in beiden Schreibweisen ein



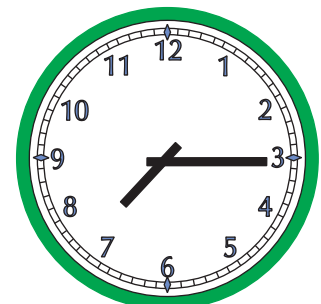
5:15 Uhr

17:15 Uhr



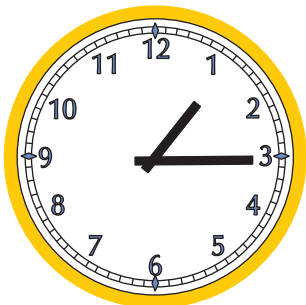
2:45 Uhr

 Uhr



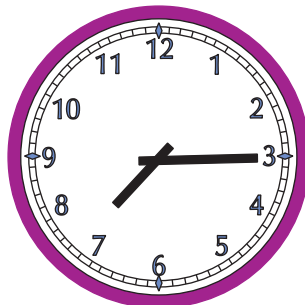
 Uhr

 Uhr



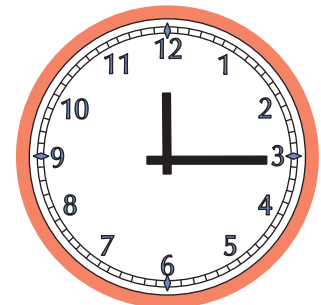
 Uhr

 Uhr



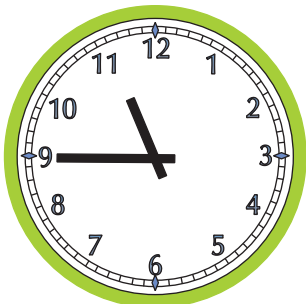
 Uhr

 Uhr



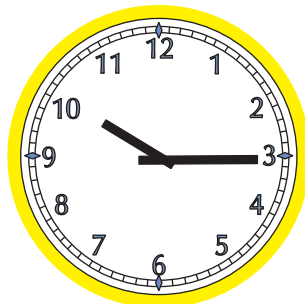
 Uhr

 Uhr



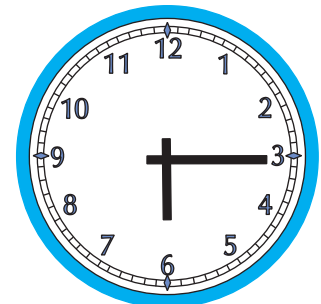
 Uhr

 Uhr



 Uhr

 Uhr



 Uhr

 Uhr